

Square Bars Cont.

1018 Steel Square Bar

A low-carbon steel, having a higher manganese content than other low-carbon steels, such as 1020. 1018 is a better steel for carburized parts, since it produces a harder and more uniform case. It also has higher mechanical properties and better machining characteristics.

- Conforms to ASTM A108
- Tensile Strength: 85,000 psi
- Yield Strength: 70,000 psi
- Brinell Hardness: 167
- Cold Finished

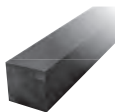


| Steel 1018 | | | | | |
|------------|----------|----------|----------|----------|----------|
| Size | 3 ft | | 6 ft | 12 ft | C-T-L |
| | Part No. | Part No. | Part No. | Part No. | Part No. |
| 1/8" | 0963222 | 0963223 | 0963224 | 0950255 | |
| 3/16" | 0963227 | 0963226 | 0963225 | 0950256 | |
| 1/4" | 0953250 | 0963228 | 0963229 | 0999999 | |
| 5/16" | 0963232 | 0963231 | 0963230 | 0999998 | |
| 3/8" | 0963235 | 0963234 | 0963233 | 0999997 | |
| 7/16" | 0963238 | 0963237 | 0963236 | 0999996 | |
| 1/2" | 0953251 | 0963239 | 0963240 | 0999995 | |
| 9/16" | 0963243 | 0963242 | 0963241 | 0999994 | |
| 5/8" | 0963246 | 0963245 | 0963244 | 0999993 | |
| 11/16" | 0963247 | 0963248 | 0963249 | 0999992 | |
| 3/4" | 0953252 | 0963251 | 0963250 | 0999991 | |
| 7/8" | 0963254 | 0963253 | 0963252 | 0999990 | |
| 1" | 0953253 | 0963255 | 0963256 | 0999989 | |
| 1-1/8" | 0963259 | 0963258 | 0963257 | 0999988 | |
| 1-1/4" | 0963262 | 0963261 | 0963260 | 0999987 | |
| 1-3/8" | 0963265 | 0963264 | 0963263 | 0999986 | |
| 1-1/2" | 0963268 | 0963267 | 0963266 | 0999985 | |
| 1-3/4" | 0963271 | 0963270 | 0963269 | 0999984 | |
| 2" | 0963274 | 0963273 | 0963272 | 0999983 | |
| 2-1/4" | - | - | - | 0999982 | |
| 2-1/2" | 0963277 | 0963276 | 0963275 | 0999981 | |
| 2-3/4" | - | - | - | 0999980 | |
| 3" | 0963280 | 0963279 | 0963278 | 0999979 | |
| 3-1/4" | - | - | - | 0999978 | |
| 3-1/2" | - | - | - | 0999977 | |

1045 Steel Square Bar

1045 is a medium-carbon steel. The higher carbon content imparts higher strength properties than 1018.

- Conforms to ASTM A108
- Tensile Strength: 110,000 psi
- Yield Strength: 85,000 psi
- Brinell Hardness: 223
- Cold Finished

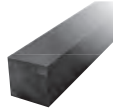


| Size | C-T-L | |
|--------|----------|----------|
| | Part No. | Part No. |
| 1/4" | 0950257 | |
| 1/2" | 0987194 | |
| 3/4" | 0987195 | |
| 1" | 0987196 | |
| 1-1/4" | 0987197 | |
| 1-1/2" | 0987198 | |
| 1-3/4" | 0987199 | |
| 2" | 0987200 | |

12L14 Steel Square Bar

Consider 12L14 for applications that require considerable machining. 12L14 gives a smooth, machined surface and because of its low friction component allows for increased tool life.

- Conforms to ASTM A108
- Tensile Strength: 78,000 psi
- Yield Strength: 70,000 psi
- Brinell Hardness: 163
- Cold Finished

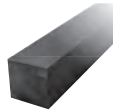


| Size | C-T-L | |
|--------|----------|----------|
| | Part No. | Part No. |
| 1/4" | 0987364 | |
| 5/16" | 0987365 | |
| 3/8" | 0987366 | |
| 7/16" | 0987367 | |
| 1/2" | 0987368 | |
| 9/16" | 0987369 | |
| 5/8" | 0987370 | |
| 3/4" | 0987371 | |
| 7/8" | 0987372 | |
| 1" | 0987373 | |
| 1-1/8" | 0987374 | |
| 1-1/4" | 0987375 | |
| 1-3/8" | 0987376 | |
| 1-1/2" | 0987377 | |
| 1-3/4" | 0987378 | |
| 2" | 0987379 | |
| 2-1/2" | 0987380 | |
| 3" | 0950254 | |

4140 Steel Square Bar

4140 is a chromium-molybdenum alloy steel that is oil hardened to a relatively high hardenability. The chromium content provides good hardness and high strength. Often used for forging due to its self-scaling properties.

- Conforms to ASTM A331
- Tensile Strength: 70,000 psi
- Yield Strength: 60,000 psi
- Brinell Hardness: 200
- Cold Finished
- Annealed



| Size | C-T-L | |
|--------|----------|----------|
| | Part No. | Part No. |
| 1/4" | 0987465 | |
| 3/8" | 0987467 | |
| 7/16" | 0987468 | |
| 1/2" | 0987469 | |
| 9/16" | 0987470 | |
| 5/8" | 0987471 | |
| 3/4" | 0987473 | |
| 7/8" | 0987474 | |
| 1" | 0987475 | |
| 1-1/8" | 0987476 | |
| 1-1/4" | 0987477 | |
| 1-3/8" | 0987478 | |
| 1-1/2" | 0987479 | |
| 1-3/4" | 0987480 | |
| 2" | 0987481 | |
| 2-1/4" | 0987482 | |
| 2-1/2" | 0987483 | |
| 2-3/4" | 0987484 | |
| 3" | 0987485 | |
| 3-1/4" | 0987486 | |
| 3-1/2" | 0987487 | |

Rebar Anti-Implément Caps

Anti-Implément Caps

Rebar covers that meet federal OSHA Spec. #1926.701b Provides additional protection against falls and impalement on the jobsite.



| Part No. | Size | Rebar Range |
|----------|---------|-------------|
| 0120843 | 4" x 4" | #3 - #8 |

Reinforcing Bars

Rebar Grade 60

Concrete reinforcing bars, or as they are more technically known, deformed steel reinforcing bars, are used in reinforced concrete construction.

- Conforms to ASTM A615



| Size | Dia. | 60 | | | | |
|-----------|----------|----------|----------|----------|----------|---------------|
| | | 3 ft | 6 ft | 10 ft | 20 ft | Cut-to-Length |
| Part No. | Part No. | Part No. | Part No. | Part No. | Part No. | |
| #3 3/8" | 0964840 | 0953286 | 0964839 | 0964838 | 0999868 | |
| #4 1/2" | 0964845 | 0953287 | 0964846 | 0964847 | 0999867 | |
| #5 5/8" | 0964850 | 0953288 | 0964849 | 0964848 | 0999866 | |
| #6 3/4" | 0964853 | 0953289 | 0964852 | 0964851 | 0999865 | |
| #7 7/8" | 0964857 | 0964856 | 0964855 | 0964854 | 0999864 | |
| #8 1" | 0964858 | 0964859 | 0964860 | 0964861 | 0999863 | |
| #9 1-1/8" | - | - | - | - | 0999862 | |



If you can't find it in our catalog or on fastenal.com, contact your local Fastenal store. Your local store team has rapid access to thousands of quality certified suppliers around the world.

RAW MATERIALS