

Cable Lugs Cont.

Copper Compression Lug, One-Hole, Standard Barrel



- For use with stranded copper conductors
- Color coded barrels marked with **PANDUIT** and specified competitor die index numbers for proper crimp die selection
- UL Listed and CSA Certified to 35Kv** and temperature rated to 90°C when crimped with **PANDUIT** and specified competitor crimping tools and dies
- Inspection window to visually assure full conductor insertion
- Tested by Telcordia - meets NEBS Level 3
- American Bureau of Shipping Type Approved



**Consult cable manufacturer for voltage stress relief instructions with applications greater than 2000 Volts



Hole Size - 1/4"		
Part No.	Mfg. No.	Wire Size
0706900	LCA6-14-L	6 AWG
0706902	LCA4-14-L	4 - 3 AWG Stranded, 2 AWG Solid
0706904	LCA2-14-Q	2 AWG
0706909	LCA1/0-14-X	1/0 AWG

Hole Size - 5/16"		
Part No.	Mfg. No.	Wire Size
0706901	LCA6-56-L	6 AWG
0706905	LCA2-56-Q	2 AWG
0706907	LCA1-56-E	1 AWG
0706910	LCA1/0-56-X	1/0 AWG
0706913	LCA2/0-56-X	2/0 AWG

Hole Size - 3/8"		
Part No.	Mfg. No.	Wire Size
0706903	LCA4-38-L	4 - 3 AWG Stranded, 2 AWG Solid
0706906	LCA2-38-Q	2 AWG
0706908	LCA1-38-E	1 AWG
0706911	LCA1/0-38-X	1/0 AWG
0706914	LCA2/0-38-X	2/0 AWG
0706916	LCA3/0-38-X	3/0 AWG
0706918	LCA4/0-38-X	4/0 AWG

Hole Size - 1/2"		
Part No.	Mfg. No.	Wire Size
0706912	LCA1/0-12-X	1/0 AWG
0706915	LCA2/0-12-X	2/0 AWG
0706917	LCA3/0-12-X	3/0 AWG
0706919	LCA4/0-12-X	4/0 AWG

Twist-on Wire Connectors

Wire-Nut® Wire Connectors

- Five color-coded models cover a full range of wire sizes from 22-8 AWG
- Fixed, square-wire spring creates its own threads - maintains a secure positive grip
- No pre-twisting required - positive grip design provides fast, easy installation
- UL Listed to 486C and CSA certified to C22.2 comply with Federal Specification W-S-610E

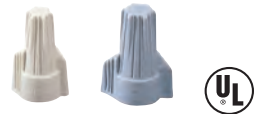


Part No.	Mfg. No.	Voltage	Wire Size	Color	Pkg. Qty.
0701807	30-171	300	22 - 16 AWG	Gray	1000
0701808	30-272	300	22 - 14 AWG	Blue	10000
0701809	30-673	600	22 - 14 AWG	Orange	10000
0701810	30-674	600	18 - 12 AWG	Yellow	5000
0701811	30-276	600	18 - 10 AWG	Red	250



Twister® Wire Connectors

- Rated for 600 Volt maximum
- Swept-wing design for comfort
- Hexagonal shape for standard nutdriver
- UL Listed and CSA Certified
- Shell rated for 105°C



Part No.	Mfg. No.	Voltage	Wire Size	Style	Color	Pkg. Qty.
0701812	30-341	600	22 - 8 AWG	Twist-On	Tan	100
0701813	30-342	600	18 - 8 AWG	Twist-On	Gray	50
0701817	30-641	600	22 - 8 AWG	Twist-On	Tan	500
0701818	30-642	600	18 - 8 AWG	Twist-On	Gray	250

Wing-Nut® Wire Connectors

- Three color-coded models cover a full range of wire sizes from 18 through 6 AWG
- Specially designed contoured wings provide a secure grip for extra leverage on maximum wire combinations
- Live-action spring expands to accept wire shape and size with no pre-twisting required
- UL Listed to 486C and CSA Certified to C22.2 comply with Federal Specification W-S-610E



Voltage - 600 Color - Blue			
Part No.	Mfg. No.	Wire Size	Pkg. Qty.
0724899	30-454	14 - 6 AWG	25
0711247	30-654	14 - 6 AWG	100
0701816	30-554	14 - 6 AWG	250

Voltage - 600 Color - Red			
Part No.	Mfg. No.	Wire Size	Pkg. Qty.
0721269	30-452	18 - 8 AWG	100
0711245	30-452J	18 - 8 AWG	300
0701820	30-652	18 - 8 AWG	500

Voltage - 600 Color - Yellow			
Part No.	Mfg. No.	Wire Size	Pkg. Qty.
0701814	30-451	18 - 10 AWG	100
0711243	30-451J	18 - 10 AWG	225
0701819	30-651	18 - 10 AWG	500

Weatherproof™ Wire Connectors

- Suitable for interior and exterior electrical connections exposed to rain or damp conditions
- Silicone-based sealant protects against moisture and corrosion
- UL Listed to 486D for use in damp/wet locations
- Easy to apply, pre-filled twist-on wire connectors
- Handles wire sizes from #22 to #6 copper conductors



Part No.	Mfg. No.	Wire Size	Voltage	Color	Pkg. Qty.
0721256	30-161	22 - 14 AWG	600	Blue / Orange	25
0721257	30-162	18 - 8 AWG	600	Blue / Red	20
0721258	30-163	16 - 6 AWG	600	Blue / Dark Blue	15
0721271	30-764	18 - 8 AWG	600	Blue / Dark Blue	10
0724514	30-760	20 - 10 AWG	600	Blue / Dark Blue	10



B-Cap® Wire Connectors

- Three color-coded models cover a full range of wire sizes from 22 to 6 AWG
- Temperature: 105°C, 221°F



Voltage - 600				
Part No.	Mfg. No.	Wire Size	Color	Pkg. Qty.
0711250	B1-1	22 - 10 AWG	Yellow	100
0711251	B1-B	22 - 10 AWG	Yellow	500
0711252	B2-1	22 - 8 AWG	Red	100
0711253	B2-B	22 - 8 AWG	Red	500
0711254	B4-1	14 - 6 AWG	Blue / Gray	25
0711255	B4-B	14 - 6 AWG	Blue / Gray	250

ELECTRICAL