

**Mounts**

**Neoprene Mounts**

Neoprene Mountings are better isolators than isolation pads because they are thicker (taller) and provide more deflection. Top bolts and washers are provided for bolting to the equipment.



Part No.	Screw Size	Overall Height	Capacity	Max Deflection Rating	Bottom of Mount Size	Top of Mount Size
0459868	5/16-18 x 3/4"	1-1/2"	60 - 125 lb	0.35"	1-5/8" x 3-3/16"	1-1/4"
0459871	3/8-16 x 1"	1-7/8"	190 - 380 lb	0.40"	2-5/16" x 3-7/8"	1-3/4"
0459873	1/2-13 x 1"	2-3/4"	200 - 400 lb	0.50"	3-5/16" x 5-1/2"	2-9/16"
0459874	1/2-13 x 1"	2-3/4"	310 - 600 lb	0.50"	3-5/16" x 5-1/2"	2-9/16"
0459875	1/2-13 x 1"	2-3/4"	520 - 1000 lb	0.50"	3-5/16" x 5-1/2"	2-9/16"

**Spring Mounts**

- Steel springs reduce vibration transmission most efficiently as performance improves with larger deflection
- Minimum deflection is 0.75" which increases with heavier loadings
- Spring deflection is 2-6 times higher than the rubber products
- Sponge rubber guides improve stability
- Use the holes to bolt to beams. Slots are easier on the floor. Bolting is seldom required because of non-skid pads
- Select mountings based on weight distribution
- Material: Ductile Iron with Powder Coated Paint finish



Application: Compressors, blowers, air conditioning equipment, pumps, air handling equipment

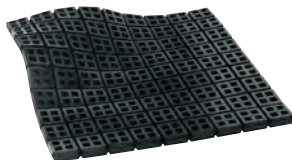
Part No.	Screw Size	Overall Height	Capacity	Bottom of Mount Size	Top of Mount Size	Max Deflection Rating
0459882	3/8" x 4"	4-1/2"	45 lb	2-1/8" x 5-3/4"	4" x 2-1/8"	1.60"
0459883	3/8" x 4"	4-1/2"	35 - 75 lb	2-1/8" x 5-3/4"	4" x 2-1/8"	1.50"
0459884	3/8" x 4"	4-1/2"	76 - 125 lb	2-1/8" x 5-3/4"	4" x 2-1/8"	1.33"
0459886	3/8" x 4"	4-1/2"	230 - 310 lb	2-1/8" x 5-3/4"	4" x 2-1/8"	1.00"
0459887	3/8" x 4"	4-1/2"	300 - 400 lb	2-1/8" x 5-3/4"	4" x 2-1/8"	1.00"
0459888	3/8" x 4"	4-1/2"	380 - 510 lb	2-1/8" x 5-3/4"	4" x 2-1/8"	1.00"
0459889	3/8" x 4"	4-1/2"	460 - 625 lb	2-1/8" x 5-3/4"	4" x 2-1/8"	1.00"

**Vibration Pads**

**Neoprene Vibration Isolation Pad**

18" x 18" sheet contains 81 2" square pads joined by a thin membrane.

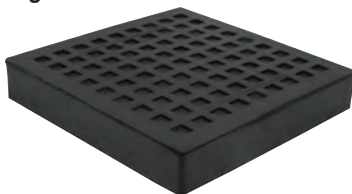
- Easily cut to a variety of sizes with a box cutter or scissors
- Waffle design is self-gasketing against spills
- Sealed square holes improve suction and grip



Part No.	Thickness	Base Diameter	Capacity
4132734	3/4"	18" square	14580 lb

**Natural Rubber Load Bearing Pads**

- High load capacity



Part No.	Thickness	Base Diameter	Capacity
4132745	1"	4" square	2400 lb
4132746	1"	6" square	7900 lb
4132747	1"	8" square	16000 lb

**Neoprene and Cork Vibration Isolation Pads**

- Primarily for acoustic problems
- Economical



Part No.	Thickness	Base Diameter	Capacity
4132838	1"	2" square	200 lb
4132839	1"	3" square	450 lb
4132840	1"	4" square	800 lb
4132841	1"	6" square	1800 lb

**Hangers**

**Neoprene Hangers**

- An excellent general purpose double deflection neoprene hanger for ceiling suspended mechanical equipment and piping.
- These hangers are most effective for reducing noise transmission and vibration from equipment running above 1000 rpm.
- The deflection are double that of competitive single deflection hangers when the location is critical or greater vibration reduction is important refer to Spring Hanger Vibrations Isolators.
- Steel material is finished with powder coated paint



Part No.	Width	Height	Rod Size	Capacity
0459876	2-1/4"	2-3/4"	1/2"	45 lb
0459877	2-1/4"	2-3/4"	1/2"	40 - 75 lb
0459879	4-1/4"	4-1/2"	3/4"	115 - 235 lb
0459880	4-1/4"	4-1/2"	3/4"	190 - 380 lb
0459881	4-1/4"	4-1/2"	3/4"	325 - 650 lb

**Spring Hangers**

- Steel springs reduce vibration transmission most efficiently as performance improves with larger deflection.
- Minimum deflection is 0.75" which increases with heavier loadings.
- Spring deflection is 2-6 times better than the neoprene products.
- Hangers have neoprene cups under the springs to prevent sound transmission.
- A projecting rubber bushing prevents sound transmission if hanger rods are not perfectly centered.
- Finish is powder coated paint



Part No.	Width	Height	Rod Size	Capacity
0459890	2-7/8"	4"	3/8"	55 - 76 lb
0459891	2-7/8"	4"	3/8"	80 - 113 lb
0459892	2-7/8"	4"	3/8"	130 - 175 lb
0459893	2-7/8"	4"	3/8"	162 - 210 lb
0459894	3-3/4"	5-3/4"	5/8"	230 - 310 lb
0459896	3-3/4"	5-3/4"	5/8"	380 - 510 lb
0459897	3-3/4"	5-3/4"	5/8"	460 - 625 lb



*Each of our 2,700 local stores is a one-stop source for the supplies you need to prepare for and deal with natural disasters.*