

**Circuit Breakers**

**Push-to-Reset ATC Circuit Breakers**



- Fits ATC fuse blocks
- Application: Automotive & RV



Part No.	Amps	Pkg. Qty.
0760340	15	10
0760341	20	10
0760342	25	10
0760343	30	10

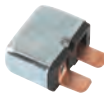
**Push-to-Reset ATC Low-Profile Circuit Breakers**



- Fits ATC fuse blocks
- Reset button on top
- Thin design to fit ATC fuse blocks
- Application: Automotive & RV

Part No.	Amps	Pkg. Qty.
0760344	10	10
0760345	15	10
0760346	20	10
0760347	25	10
0760348	30	10

**Blade Type ATC Circuit Breaker**



- Type II ATC Footprint
- Application: Automotive & RV

Part No.	Amps	Pkg. Qty.
0760349	30	10

**ATC Automotive Circuit Breakers**

- "Snap off" blades can easily be sized to fit applications where fuse block spacing is tight or recessed
- Application: Automotive



Part No.	Amps	Pkg. Qty.
0761879	10	10
0761880	15	10
0761881	20	10
0761882	25	10
0761883	30	10

**Switchable Hi-Amp® Buss® Automotive Circuit Breakers**



- Type III
- Flush mount breaker
- Complies with SAE J1117 standard
- Ignition protected
- Automotive & RV

Part No.	Amps	Style	Pkg. Qty.
0760328	60	Stud Type	1
0760329	80	Stud Type	1
0760323	100	Stud Type	1
0760324	110	Stud Type	1
0760325	120	Stud Type	1
0760326	135	Stud Type	1
0760327	150	Stud Type	1

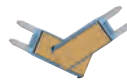
**Automatic Reset MAXI Circuit Breakers**



- Identical in size and dimension to Max fuses
- Application: Automotive, RV & Marine

Part No.	Amps	Pkg. Qty.
0760330	20	10
0760331	30	10

**Automatic Reset ATM Circuit Breakers**



- Ultra thin to fit in tight spaces
- Smallest automotive circuit breakers on the market
- Application: Automotive & RV

Part No.	Amps	Pkg. Qty.
0760332	25	10
0760333	30	10

**Modified Reset ATM Circuit Breakers**

- Ultra thin to fit in tight spaces
- Smallest automotive circuit breakers on the market
- Application: Automotive & RV



Part No.	Amps	Pkg. Qty.
0760334	10	10
0760335	15	10
0760336	20	10
0760337	25	10
0760338	30	10
0760339	10	10

**Stud Mount Short Stop Circuit Breakers**

- 10-32 Studs with nuts installed
- Application: RV, Truck & Marine



Part No.	Amps	Description	Pkg. Qty.
0760350	10	Without Bracket	10
0760351	10	With Bracket	10
0760352	15	Without Bracket	10
0760353	15	With Bracket	10
0760354	20	Without Bracket	10
0760355	20	With Bracket	10
0760356	25	Without Bracket	10
0760357	25	With Bracket	10
0760358	30	Without Bracket	10
0760359	30	With Bracket	10
0760360	35	Without Bracket	10
0760361	35	With Bracket	10
0760362	40	Without Bracket	10
0760363	40	With Bracket	10
0760364	50	Without Bracket	10
0760365	50	With Bracket	10
0760366	8	Without Bracket	10
0760367	8	With Bracket	10

**Automotive Wire**

EAST PENN manufacturing co., inc.

**100 ft & 500 ft Spools**



- All 100 ft rolls are packaged in quantities of 4
- Stranded annealed 100% copper conductor
- Rated for 60 Volts DC (25 Volts AC) or Less; Meets SAE J1128 specifications
- Temperatures rating of 85°C
- RoHS compliant; Made in the USA

Length	Wire Size	Color	100 ft Part No.	500 ft Part No.
10 AWG	Black		0702151	-
10 AWG	Blue		0702155	-
10 AWG	Brown		0702154	-
10 AWG	Gray		0702157	-
10 AWG	Green		0702152	-
10 AWG	Orange		0702156	-
10 AWG	Purple		0702158	-
10 AWG	Red		0702149	-
10 AWG	White		0702150	-
10 AWG	Yellow		0702153	-
12 AWG	Black		0702141	0702191
12 AWG	Blue		0702145	0702195
12 AWG	Brown		0702144	0702194
12 AWG	Gray		0702147	-
12 AWG	Green		0702142	0702192
12 AWG	Orange		0702146	0702196
12 AWG	Purple		0702148	-
12 AWG	Red		0702139	0702189
12 AWG	White		0702140	0702190
12 AWG	Yellow		0702143	0702193
14 AWG	Black		0702131	0702181
14 AWG	Blue		0702135	-
14 AWG	Brown		0702134	0702184
14 AWG	Dark Blue		-	0702185
14 AWG	Gray		0702137	0702187
14 AWG	Green		0702132	0702182
14 AWG	Orange		0702136	0702186
14 AWG	Purple		0702138	0702188
14 AWG	Red		0702129	0702179
14 AWG	White		0702130	0702180
14 AWG	Yellow		0702133	0702183
16 AWG	Black		0702121	0702171
16 AWG	Blue		0702125	0702175
16 AWG	Brown		0702124	0702174
16 AWG	Gray		0702127	0702177
16 AWG	Green		0702122	0702172
16 AWG	Orange		0702126	0702176
16 AWG	Purple		0702128	0702178
16 AWG	Red		0702119	0702169
16 AWG	White		0702120	0702170
16 AWG	Yellow		0702123	0702173
18 AWG	Black		0702111	0702161
18 AWG	Blue		0702115	0702165
18 AWG	Brown		0702114	0702164
18 AWG	Gray		0702117	0702167
18 AWG	Green		0702112	0702162
18 AWG	Orange		0702116	0702166
18 AWG	Purple		0702118	0702168
18 AWG	Red		0702109	0702159
18 AWG	White		0702110	0702160
18 AWG	Yellow		0702113	0702163

FLEET & AUTOMOTIVE